



*watch*

*yourp*

*erson*

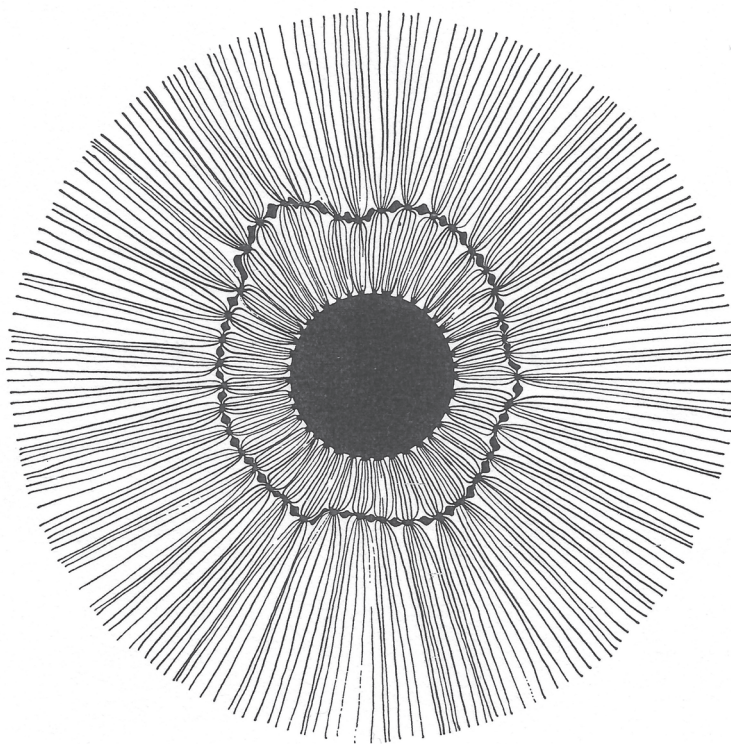
*al*

*equat*

*ion*







*a structural woman with structural eyes? like I said it was always difficult to know for sure but the way my throat felt I was sure I hadn't drunk anything for hours. It scratched and burned as if I'd talked for hours and hours on end without stop*

DIDI

D I D I

D I D I

DID

EGRESS  
ONLY

*my eyes, the way my eyes graded and were so site specific that I couldn't simply look anymore I had to gaze and saw those shapes that came out at me like bolts of destiny from the screen*

```
ELGENACTER  THC
EOSHESROHM  HTC
      ROMRIM  EH!
```

THE

# CONTACT

ZONE



. . . CAN YOU BE SURE THAT  
ANYONE SEES WHAT THEY SAY  
THAT THEY SEE . . . CAN YOU  
BE SURE THAT YOU ARE SEEING  
WITH YOUR EYES? . . .

CAN - SIZED, ROUNDISH GLASS BODIES - GREENISH BROWN  
TO BLACK, HIGHLY SILICEOUS (60-80%  $\text{SiO}_2$ )

¶¶¶¶¶  
 ℤG=+-X  
 ≤≥ΣΠΔ-√  
 56789ΠΓ  
 ЖΩ,οηC  
 §32)(23öØ  
 ∞™'4'ℤ70È  
 √∩∪∴∵∶∷∸∹  
 ⋄  
 —“”—/—  
 ∞°∇∇  
 ∫∫∫∫R9  
 Rp\$§if~Fæ  
 ÆäÄäËБЛ  
 ННУНнГ\*  
 bacdaЖЖЖ  
 КЖЖЖffbfh  
 kfkfhfçƒƒ  
 [ƒ]ÑÑÑÑ  
 XΦΘÖ  
 fl&Q  
 )  
 . . . . .  
 66  
 . . . . .  
 ∫∫∫∫  
 |  
 √∞∞  
 .  
 .

MUSE

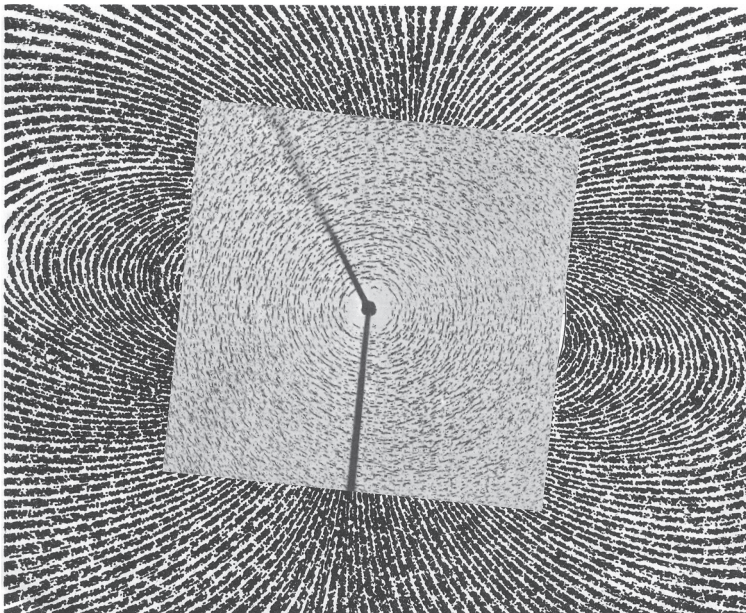
S P H I N X X X X X X X X X

Into the night it goes its own way  
Against the colour of the moon  
Aversion & Subversion  
Glass  
Flesh  
Fire

•



00~00~  
жΘθ†f≈#  
/∞01234  
IΘΠЖж  
ηfση<3  
)"!'"~  
R̃R̃ōōō÷  
~^..o.v'~  
i  
u..u..  
»» GL  
9RN  
æÆ  
bЬ  
\*\*



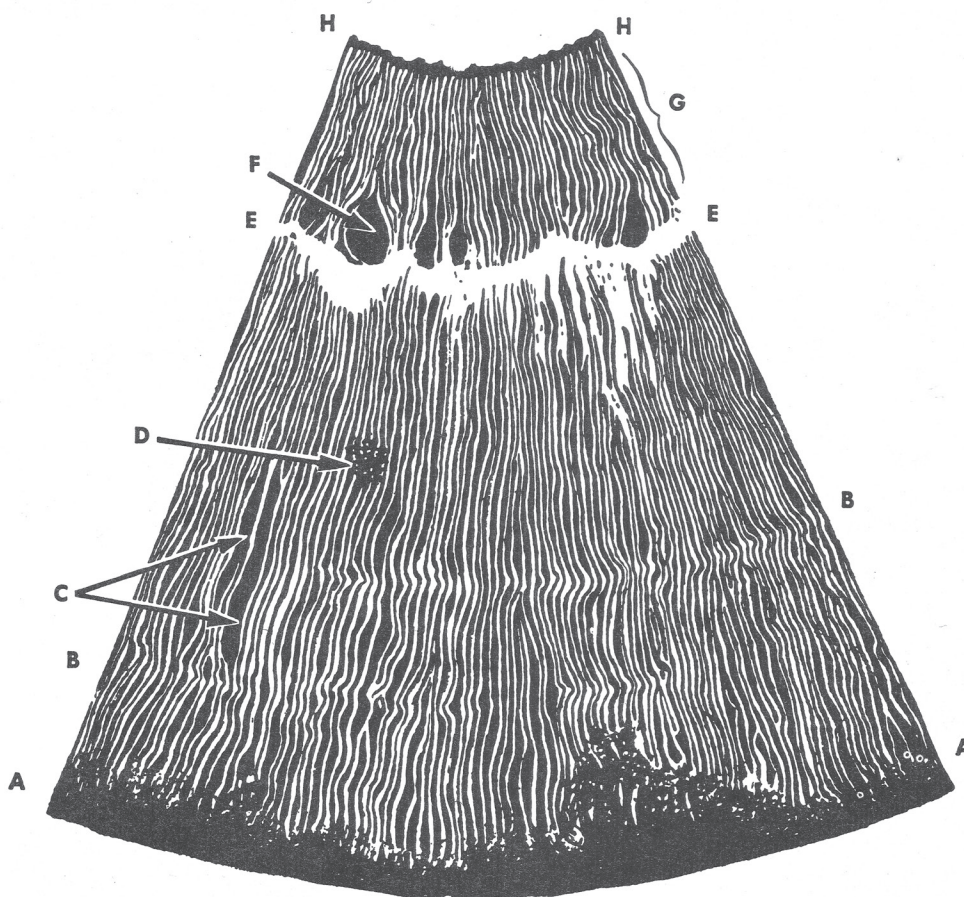
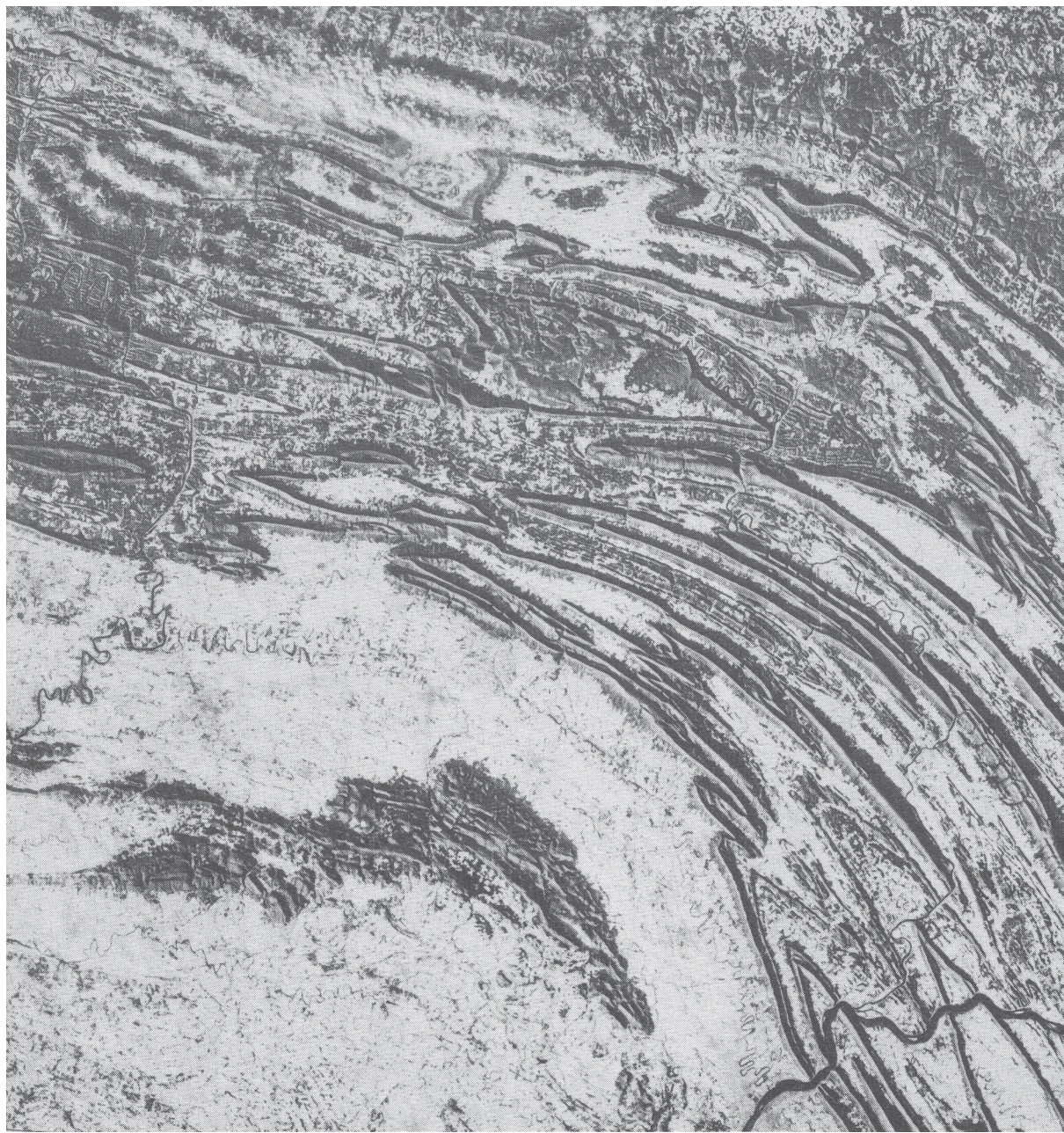


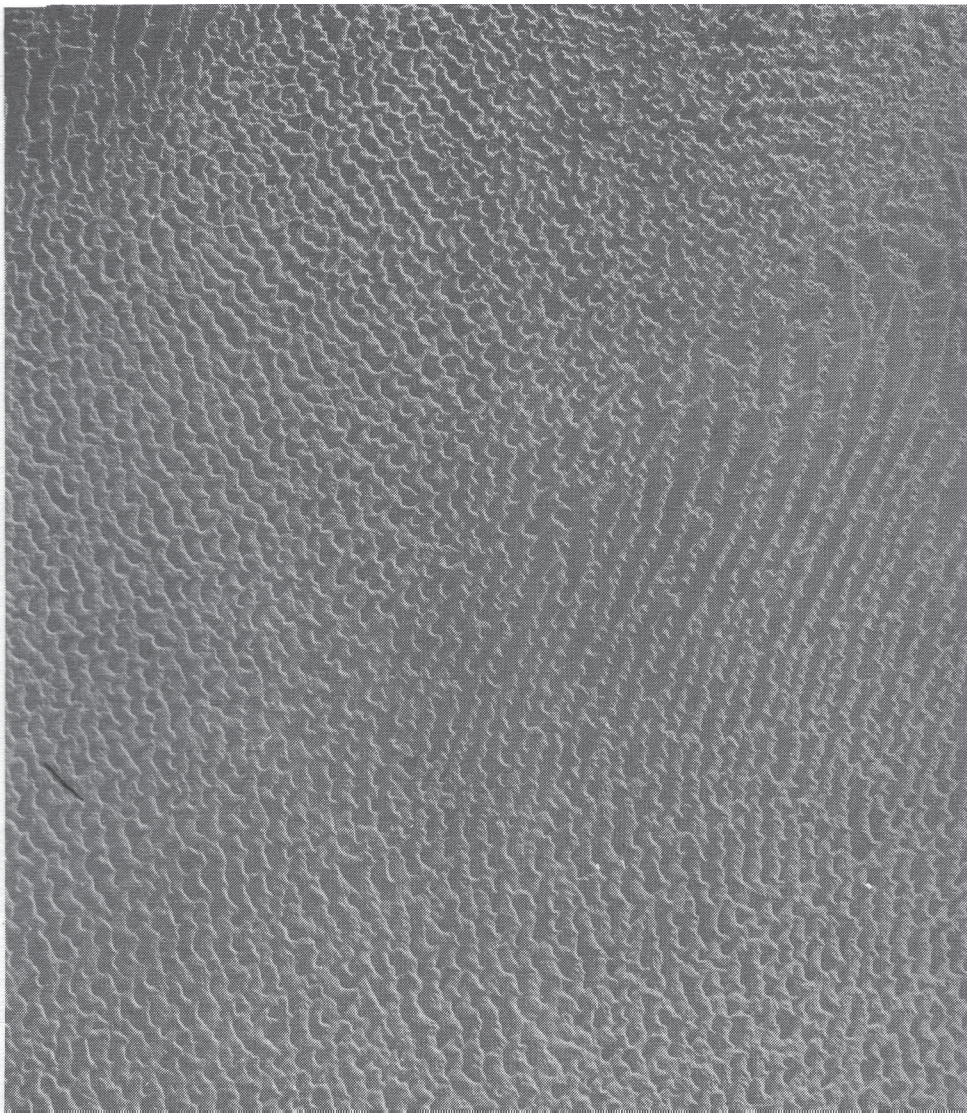
FIG. 27. A—Scurf rim  
 B—Nerve rings  
 C—Inherent weakness  
 D—Drug spot

E—Autonomic nerve wreath  
 F—Toxic settlement in bowel  
 G—Gastro-intestinal areas  
 H—Pupillary margin

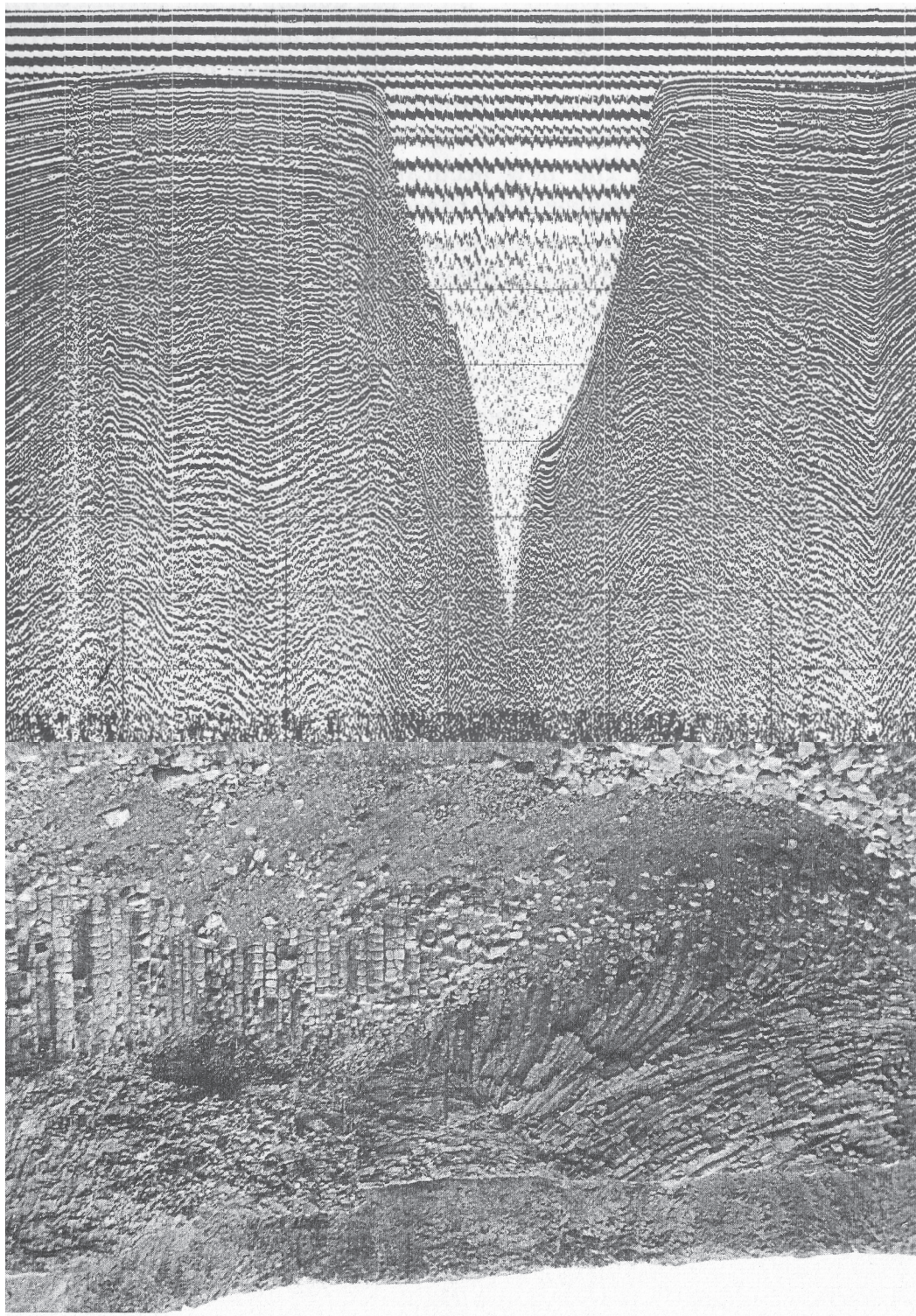




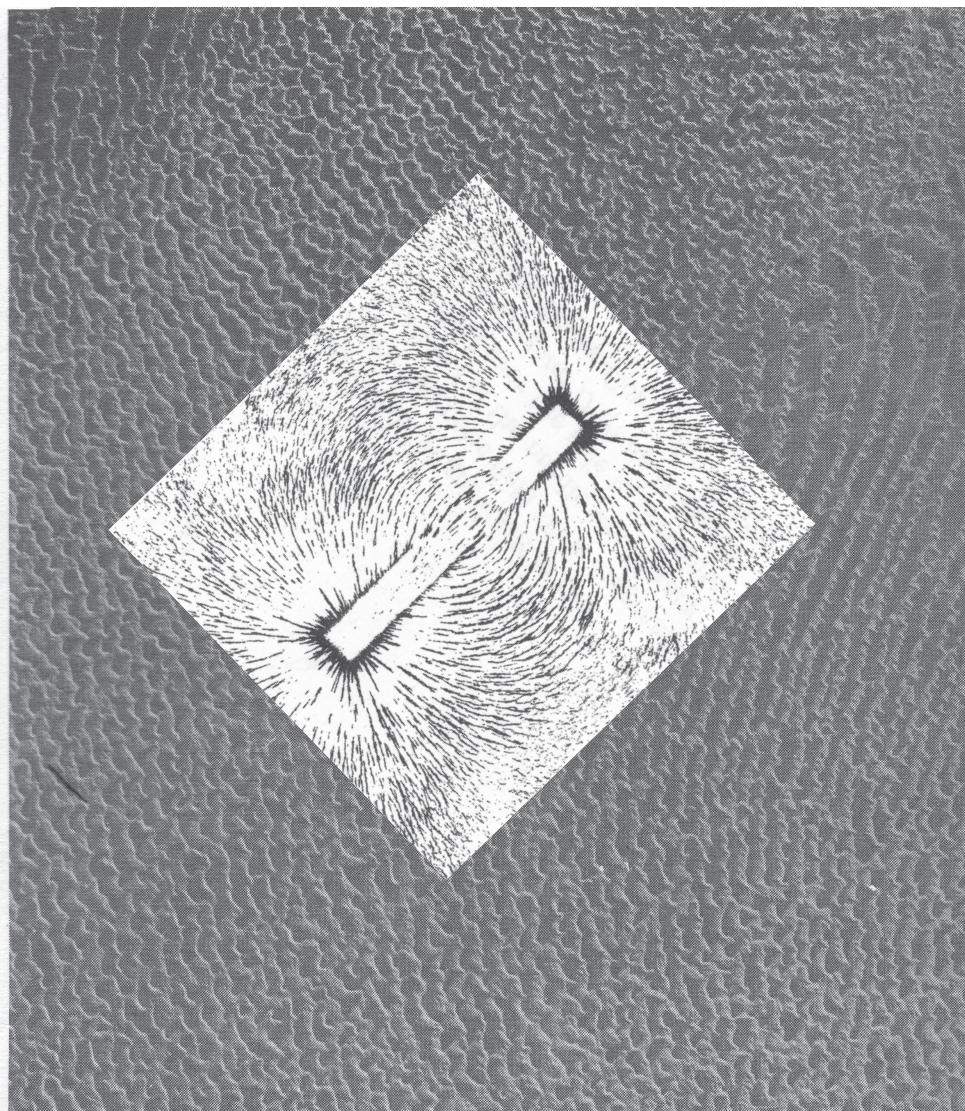




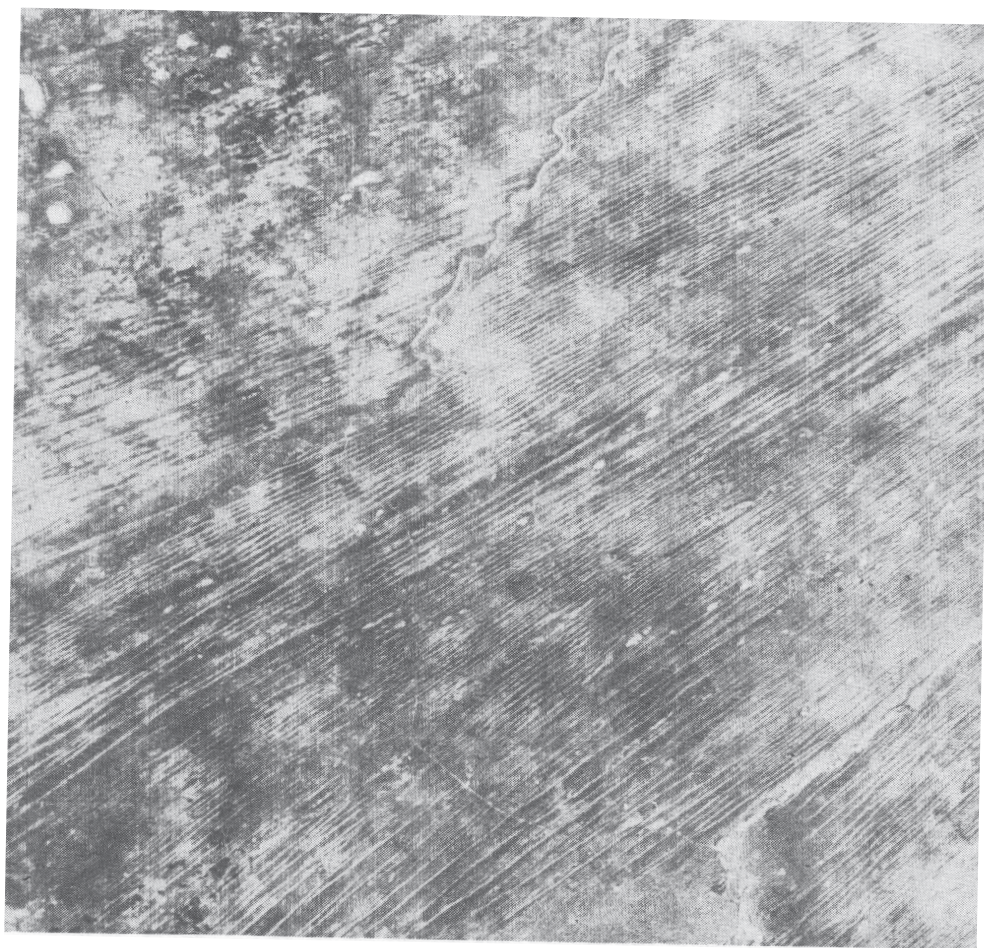












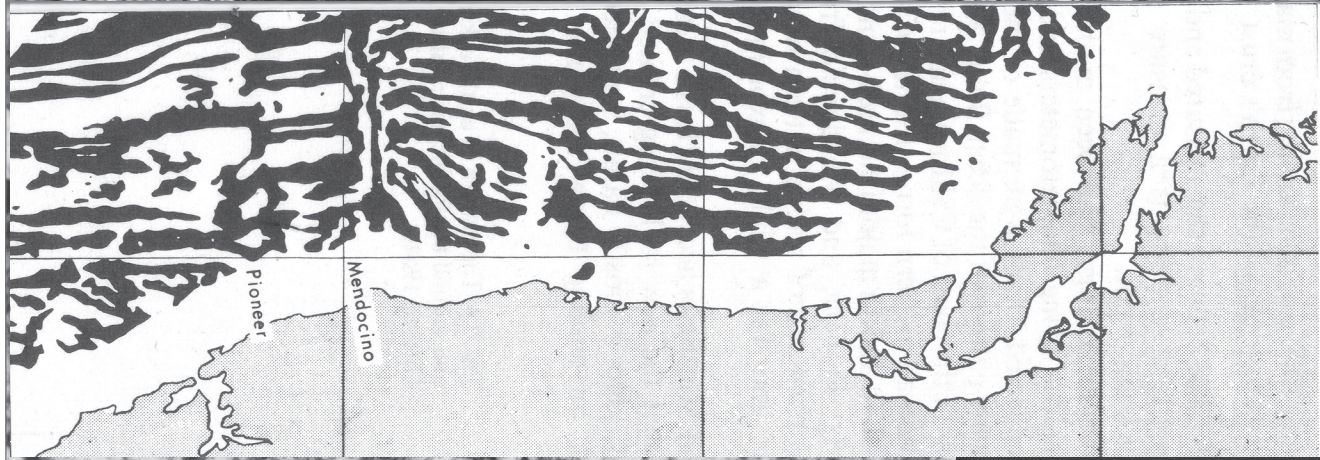
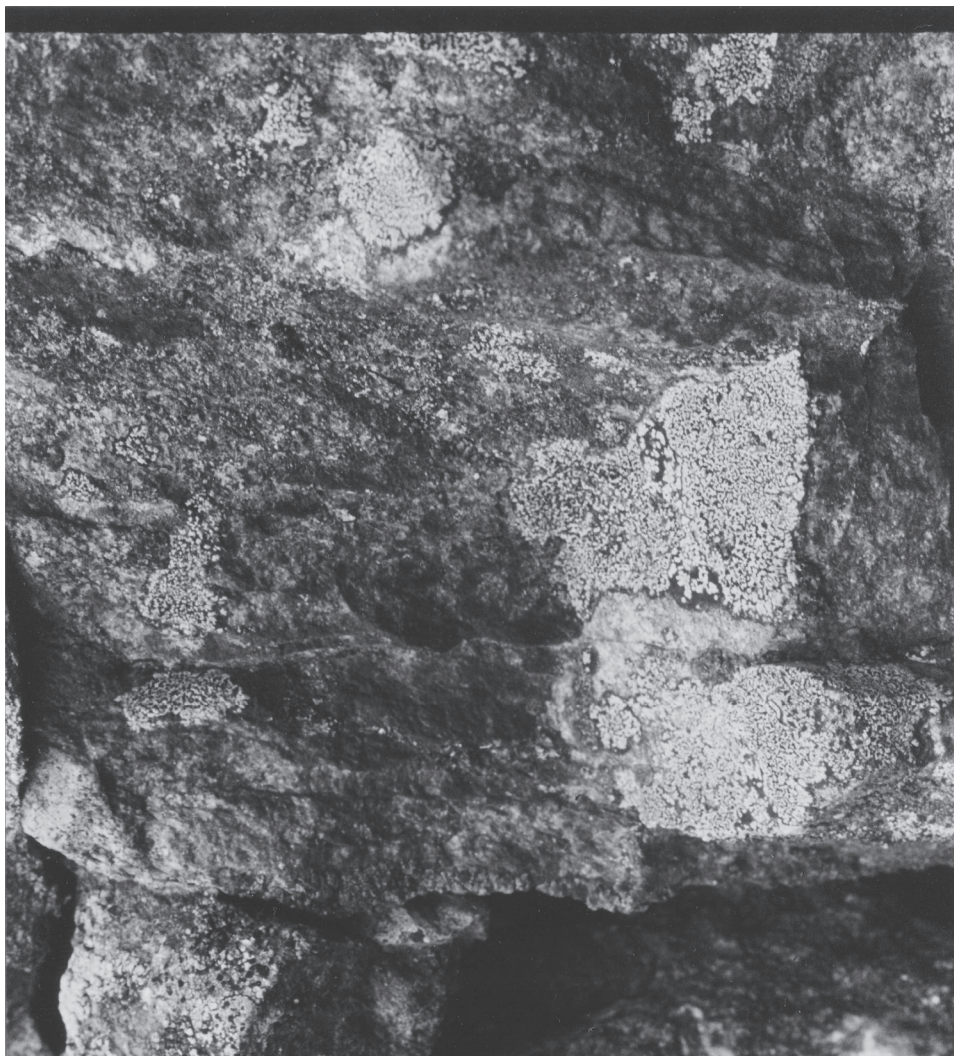


















LES RUES



9. Rue de Port-Mahon.  
Vue prise de la rue Louis-le-Grand vers le carrefour Gaillon.  
À gauche, la rue de Hanovre. (Au premier plan, la rue du 4-Septembre).

A  $\frac{1}{2}$

price

ticket

booth,

Crime sell-  
er,

peanut  
vendor, the  
*psychic* detec-  
tive of pre-  
t e r natural  
dreams

“It goes a long way, it goes a really long way . . .”

“Call of the wild,  
call them spurious occultists all you like

a bunch of *psychic leeches* – see if I care”

~~HEKAS XAS~~  
~~EST E~~  
~~BEBEL OI~~

“YAYA – *didi didi didi* shit  
it isn’t worth anything  
anymore  
anyhow  
you know  
what I mean?”

you know  
it’s just plain *rong* ~~wrong~~

>  
>  
>  
>  
>  
>  
>  
>  
>  
>  
Y O U /

DON’T  
BELONG  
HERE





CREATING *AURA* &

LOSS OF *AURA*

THE HAND

THE RECTANGLE

THE HORSES

THE MIRROR

THE MACHINE

ENIHCAM EHT

RORRIM ETH

SESROH EHT

ELGNATCER ETH

DNAH ETH

ARUA FO SSOL DNA

RAUA

RAAU

RA R





(À

PLUS)

*TARD*